

Lots of things are needed to make a computer. Many natural resources need to be mined and processed.

Extraction

All the raw materials are manufactured into materials that will make a computer.

Manufacturing & Production

Once the raw materials (plastic, lead and gold) have been processed the computer is assembled in a factory.

Once the computer is made, it is packaged. This is to make sure that it doesn't get damaged as it is transported. Packaging is usually made from plastic and cardboard.

Packaging

Most computers are made overseas and have to travel to Australia, then to the shops and then to your home or school. All forms of transport use CO2 and release fossil fuels.

Transport

Computers are very useful for work and fun, but they need electricity to work. Saving electricity reduces impact so always turn it off when you're not using it.

Usage

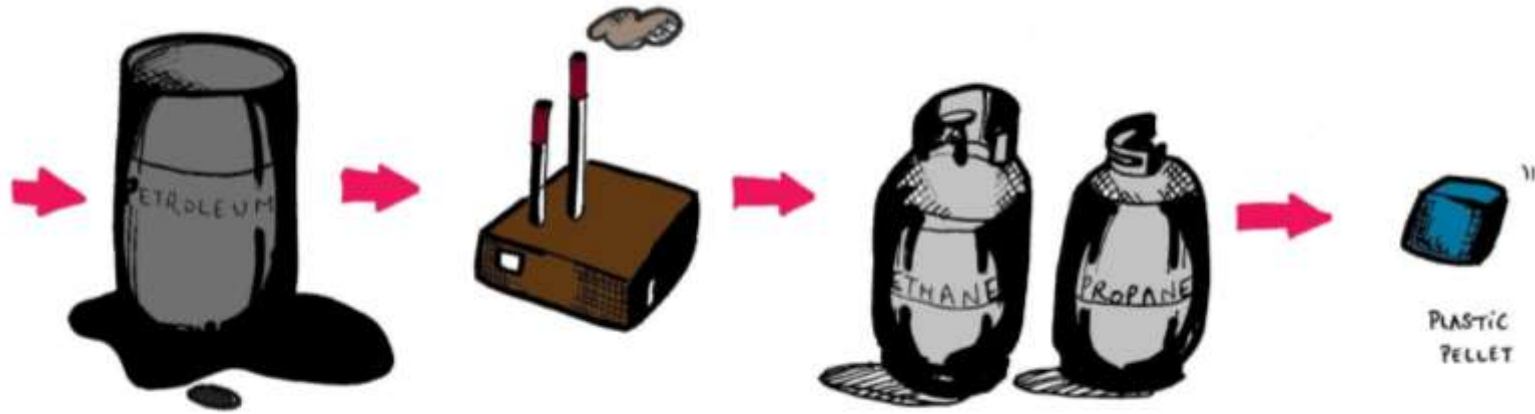
Computers contain many toxic substances (like lead) that cause major problems to humans and the environment when they are disposed of in landfill. Never dispose of electrical goods in the general waste bin.

End of Life

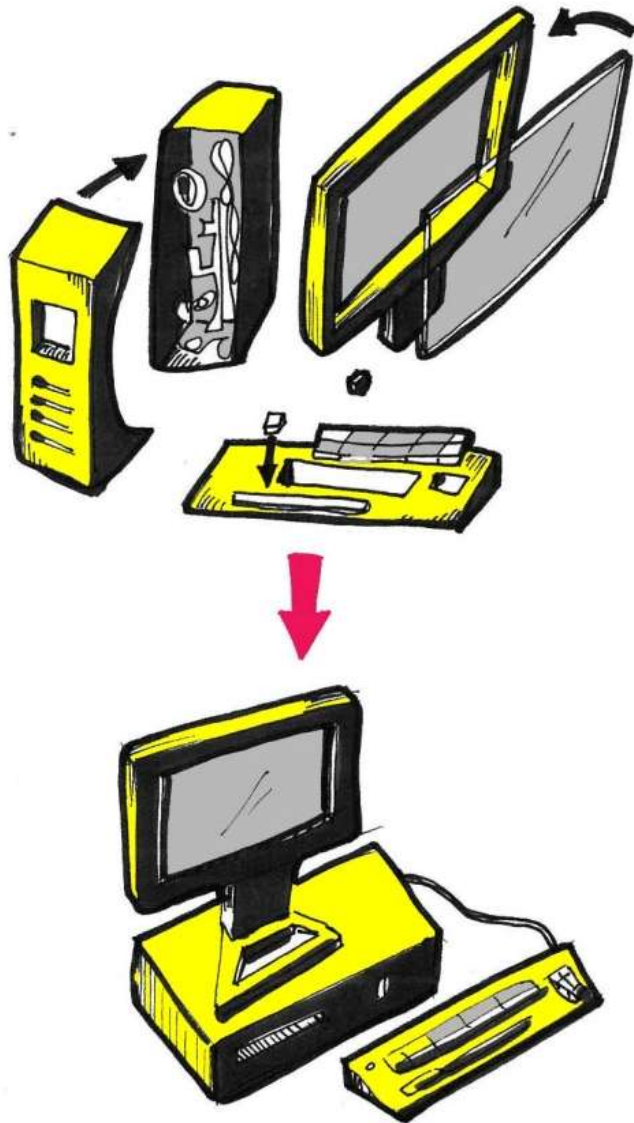
The Life Cycle of a Computer



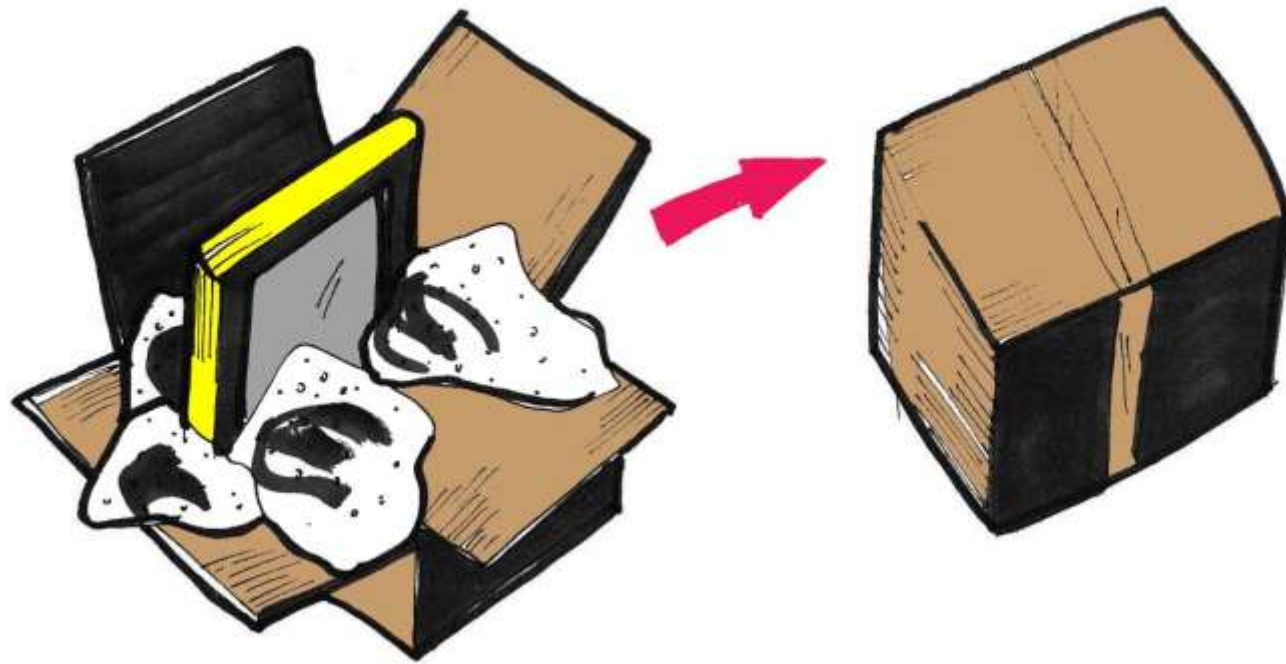
**Lots of things are needed to make a computer.
Many natural resources need to be mined and
processed.**



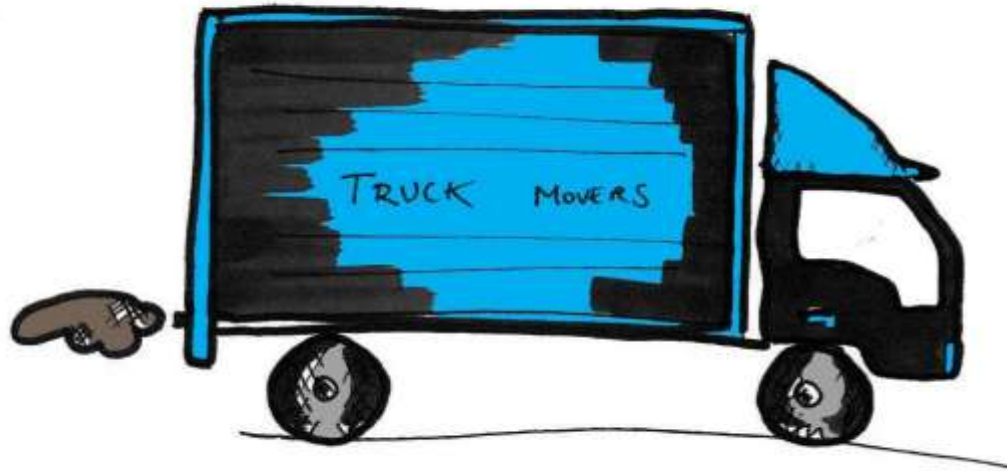
All the raw materials are manufactured into materials that will make a computer.



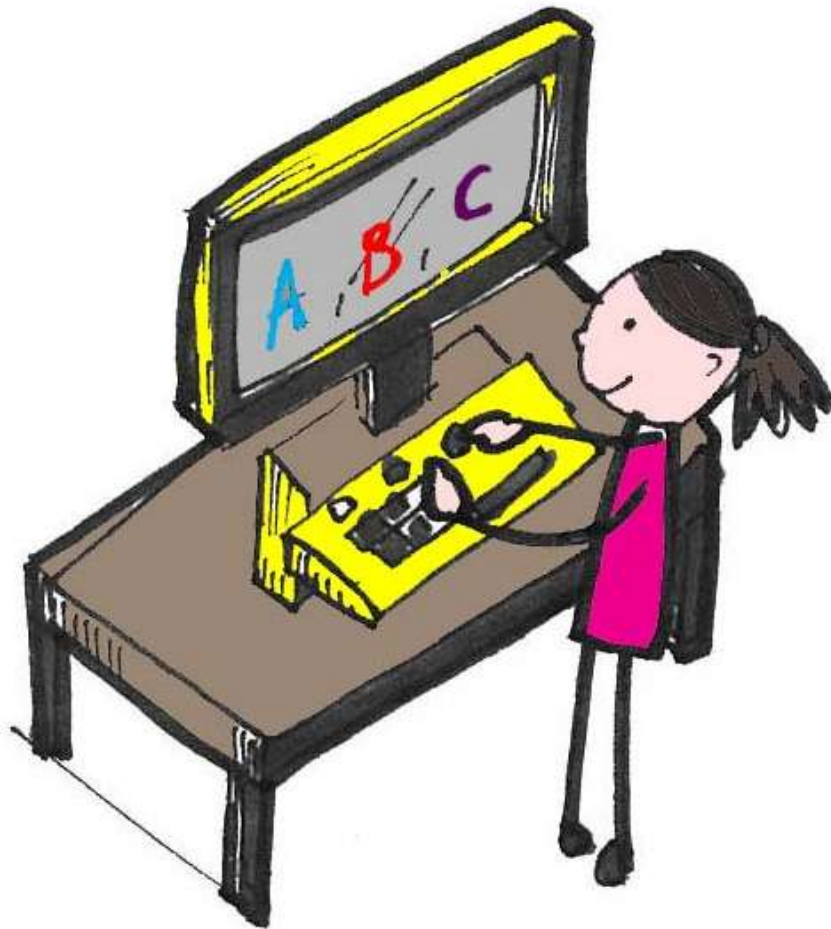
Once the raw materials (plastic, lead and gold) have been processed the computer is assembled in a factory.



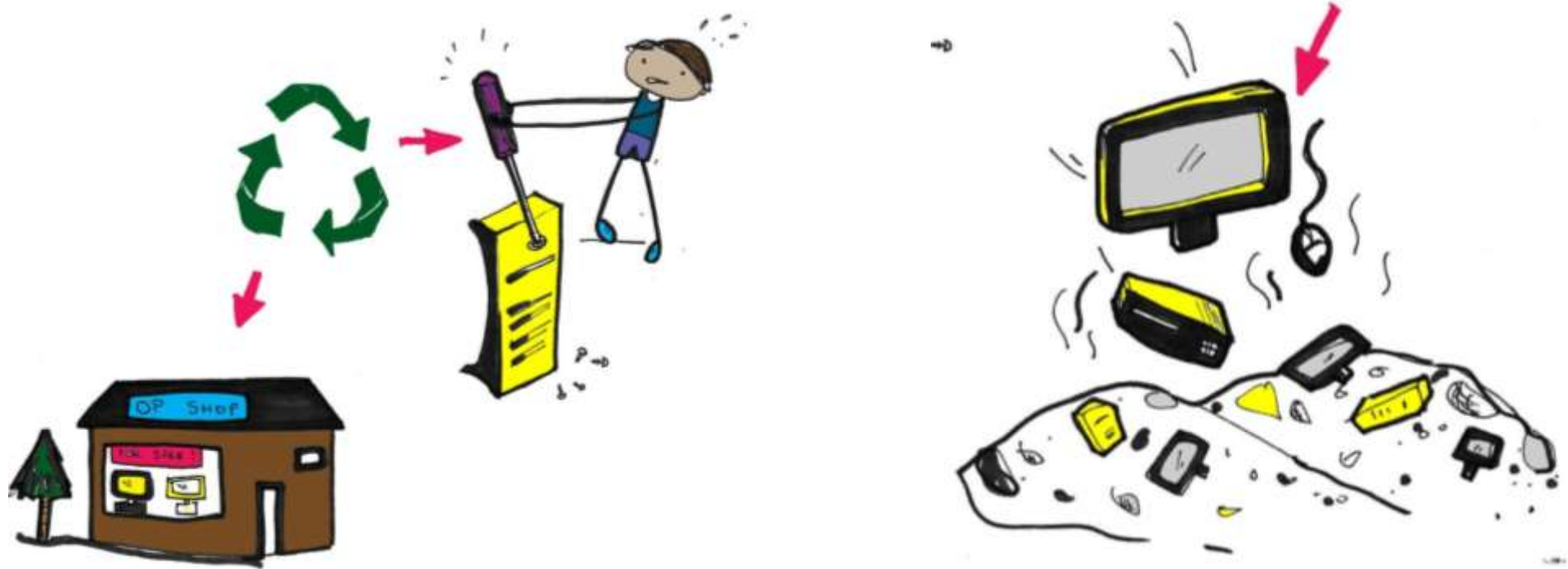
Once the computer is made, it is packaged. This is to make sure that it doesn't get damaged as it is transported. Packaging is usually made from plastic and cardboard.



Most computers are made overseas and have to travel to Australia, then to the shops and then to your home or school. All forms of transport use CO₂ and release fossil fuels.



Computers are very useful for work and fun, but they need electricity to work. Saving electricity reduces impact so always turn it off when you're not using it.



Computers contain many toxic substances (like lead) that cause major problems to humans and the environment when they are disposed of in landfill. Never dispose of electrical goods in the general waste bin.

Extraction

Manufacturing & Production

Packaging

Transport

Usage

End of Life